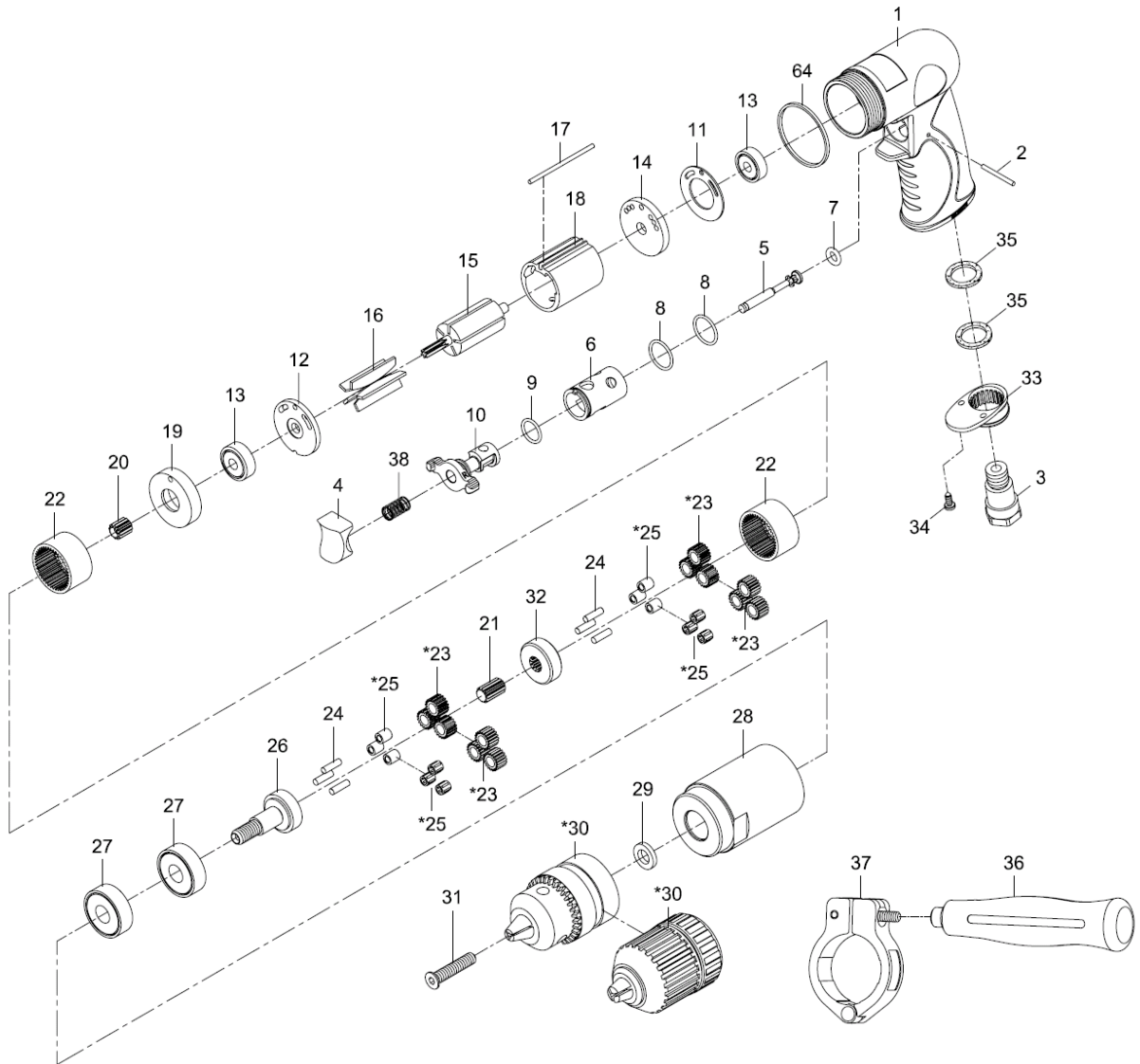


# SENCO

SEN510C

1/2" REVERSIBLE AIR DRILL



Index No.	Parts No.	Description	Index No.	Parts No.	Description
1	75-7253P01	Motor Housing	22	80222	Internal Gear (2)
2	822202	Pin (2.5x26.8)	*23	70423-11	Planet Gear (6)
3	75-725303	Air Inlet		70423-14	Planet Gear (6)
4	75-725304	Trigger	24	30124	Pin (6) (4x13.8)
5	75-725305	Valve Stem	*25	70425	Bushing (6)
6	75-725306	Valve Bushing		070428	Needle Bearing (6) (4x6x8)
7	72807-12	O-Ring (4.5x2.5)	26	70426	Work Spindle
8	795820	O-Ring (2) (15.5x1.5)	27	080227	Ball Bearing (2) (6201z)
9	80209	O-Ring (12x1.6)	28	70436	Clamp Nut
10	75-725310	Reverse Lever	29	70133	Washer
11	80211	Motor Gasket		10033-11	Key Chuck (1/2")
12	80214	End Plate	*30	10033-12	Keyless Chuck (1/2")
13	030113	Ball Bearing (2) (626zz)	31	70430-12	Screw (M5x30)
14	75-725314	Rear End Plate	32	70427	Reduction Spindle
15	80215-12	Rotor	33	70110-21	Exhaust Diffuser
16	80216	Rotor Blade (5)	34	40309	Screw (2) (TS2.9)
17	75-725317	Pin (2.5x57)	35	75-725350	Damping Material (2)
18	80218-22	Cylinder	36	822340	Handle
19	80219	Front End Plate	37	75-725139-0001S	Retainer
20	70420	Pinion Gear	38	82208	Valve Spring
21	70421	Center Gear	64	75-725351	Decoration Ring

\* Optional Parts

74-7253P-0001